

# Finding Satisfying and Rewarding Jobs

This lesson is designed to help students find future career paths based on what they value in the workplace.

## OBJECTIVES

Students will:

1. Complete the What are your Work Values assessment
2. Contemplate if they agree with the results of the assessment
3. Search for careers based on the results of the assessment

## ACTIVITIES

### PART 1

#### Content Knowledge

Have students log into MEFA Pathway and head to the What are your Work Values assessment. You can find this under the Discover Careers/Get to Know Yourself tab. As students take the assessment, have them ask themselves the following questions as a guide:

- In my ideal job, how important would this be?
- Would I leave my job if this value was not fulfilled?
- Have I experienced this at school or work? How did I react?
- When studying or doing a school project, how do I work best?

Have students follow the directions and complete the assessment. Once they have finished, they can click on "See Results." Make sure students save their results on their summary page.

### PART 2

#### Applying Information

Have students review their values assessment results and the three top values. Do they agree with their top 3 values? Have them write down their top three and their notes in a chart as shown below.

Grade Level: 10 - 12

#### MEFA PATHWAY LINKS FOR LESSON:

- What are your Work Values
- Career Search
- My Career List

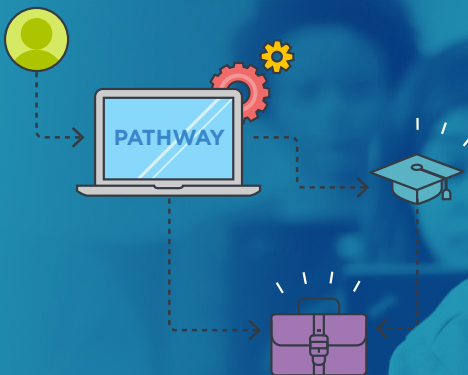
#### SUBJECT AREAS:

- Career Planning

#### MATERIALS NEEDED:

- Internet connection to work with the MEFA Pathway website

Email any questions to:  
[info@mefapathway.org](mailto:info@mefapathway.org)



# LESSON PLAN

Your Top 3 Workplace Values	What Does This Mean?
1.	1.
2.	2.
3.	3.

Email any questions to:  
[info@mefapathway.org](mailto:info@mefapathway.org)

**PART 3**

**Evaluating Information**

While still logged into MEFA Pathway, have students head to Career Search to begin searching for possible jobs. They can use the grey box on the left to filter the list of careers by various criteria

- To search for careers related to the values assessment they just completed, they can click on “Use My Values” in the grey box on the left
- Students can click a career name to view the job’s full Career Profile. Have students review several Career Profiles and for at least two click “Save.” Careers will be saved to My Career List. Have students complete the chart below.

Career Name	Why Did You Choose This Career?
1.	1.
2.	2.