

# Civic Participation

Students will learn about community service opportunities in their community, choose one of interest, complete any requirements, and create an entry on the MEFA Pathway website after they have completed their service activity.

## OBJECTIVES

Students will:

1. Learn about community service and opportunities in their community
2. Connect their own interests to community service opportunities
3. Evaluate and complete any requirements associated with serving at the location of their choice
4. Create an entry in the My Profile section on the MEFA Pathway website in order to track community service in their portfolio

## ACTIVITIES

### PART 1

#### Content Knowledge

Talk to students about community service: What is community service? Community service allows you to give back to your local, national, or international community. Community service is not something you are paid to do; it is an opportunity for you to volunteer your time in order to help others. Many community service opportunities exist, so find one that matches your interests. Volunteer with a literacy program if English is your thing, or coach a children's soccer team if you want to get outdoors. Local involvement carries just as much weight as international involvement; building a community center in East Africa is terrific, but it's also worthwhile to help out at your local food bank.

### PART 2

#### Applying Information

Tell students that they will be completing a community service project in which they volunteer their time outside of school (you may want to require a certain number of hours as well as an end date by which to have the service completed). Before the lesson, prepare an initial list of possible community service opportunities for students. Ask students to add additional opportunities to the list so other students have more options to browse through. Students should try to find a community service opportunity that matches their interests.

Grade Level: 10 - 12

#### MEFA PATHWAY LINKS FOR LESSON:

- My Profile

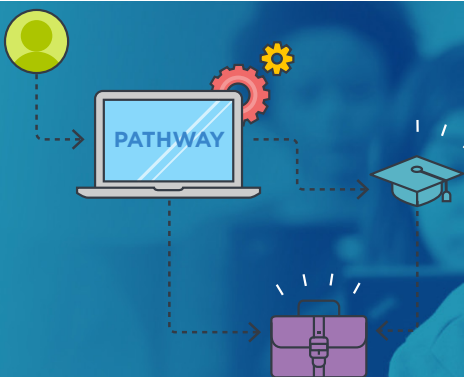
#### SUBJECT AREAS:

- Social Studies
- Civics
- Career Exploration

#### MATERIALS NEEDED:

- Internet connection to work with the MEFA Pathway website
- Community Service Reflection Handout (attached)

Email any questions to:  
[info@mefapathway.org](mailto:info@mefapathway.org)



# LESSON PLAN

## PART 3

---

### Evaluating Information

After students choose a community service opportunity, they should research any requirements necessary for completing their service. For instance, some opportunities may require that students fill out volunteer paperwork or submit references prior to volunteering.

## PART 4

---

### Critical Thinking/Creative Application

After students have completed their service opportunity, they should log their work on the My Profile page on the MEFA Pathway website. The work should be logged in the Activities section by selecting Community Service as the type of activity. Additionally, students should write a reflection on their experience conducting the community service using the Community Service Reflection Handout.

Email any questions to:  
[info@mefapathway.org](mailto:info@mefapathway.org)

# Community Service Reflection Handout

1. Where did you volunteer for your community service project?
2. When did you volunteer (dates and times)?
3. What is the name and phone number/email of your supervisor at this project?
4. What were your responsibilities?
5. What did you learn from your experience?

4. Break down how much food you will need on a monthly basis to get by. Where will you shop? If you have a meal plan, how much will that cost? What about going out to eat? What about personal items (toiletries)? Toilet paper? Soap? Etc.?

5. What about health insurance? How much does that cost per month?

6. How much will your cell phone bill cost each month?

7. How much money will you need for entertainment and recreation per month (movies, concerts, etc.)?

8. Anything else? If there are any other necessities for you per month, list them and their cost here. If you are planning to attend college, how much will it cost? Log in to the MEFA Pathway website and use the College Cost Calculator in order to see the estimated costs for tuition, fees, books, and supplies. Choose one college of your choice to complete this section.

# Civic Participation

Email any questions to:  
[info@mefapathway.org](mailto:info@mefapathway.org)

CATEGORY	EXCELLENT 4	GOOD 3	SATISFACTORY 2	NEEDS IMPROVEMENT 1
Sequencing of Information	The information is organized in a clear, logical way.	Most information is organized in a clear, logical way.	Some information is logically sequenced.	There is no clear plan for the organization of information.
Effectiveness	The worksheet includes all material needed to give a good understanding of the topic.	The worksheet is lacking one or two key elements.	The worksheet is missing more than two key elements.	The worksheet is lacking several key elements and has inaccuracies.
Includes Requirements	All requirements are addressed.	At least two of the requirements are addressed.	One of the requirements is addressed.	No requirements are addressed.
Conventions. Student uses proper grammar, punctuation, and spelling.	The worksheet has no misspellings or grammatical errors.	The worksheet has 1- 2 misspellings, but no grammatical errors.	The worksheet has 1- 2 grammatical errors but no misspellings.	The worksheet has more than 2 grammatical and/ or spelling errors.